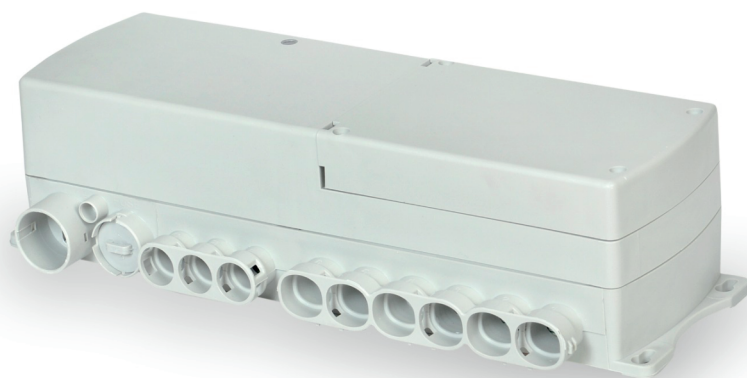


# MCU36B

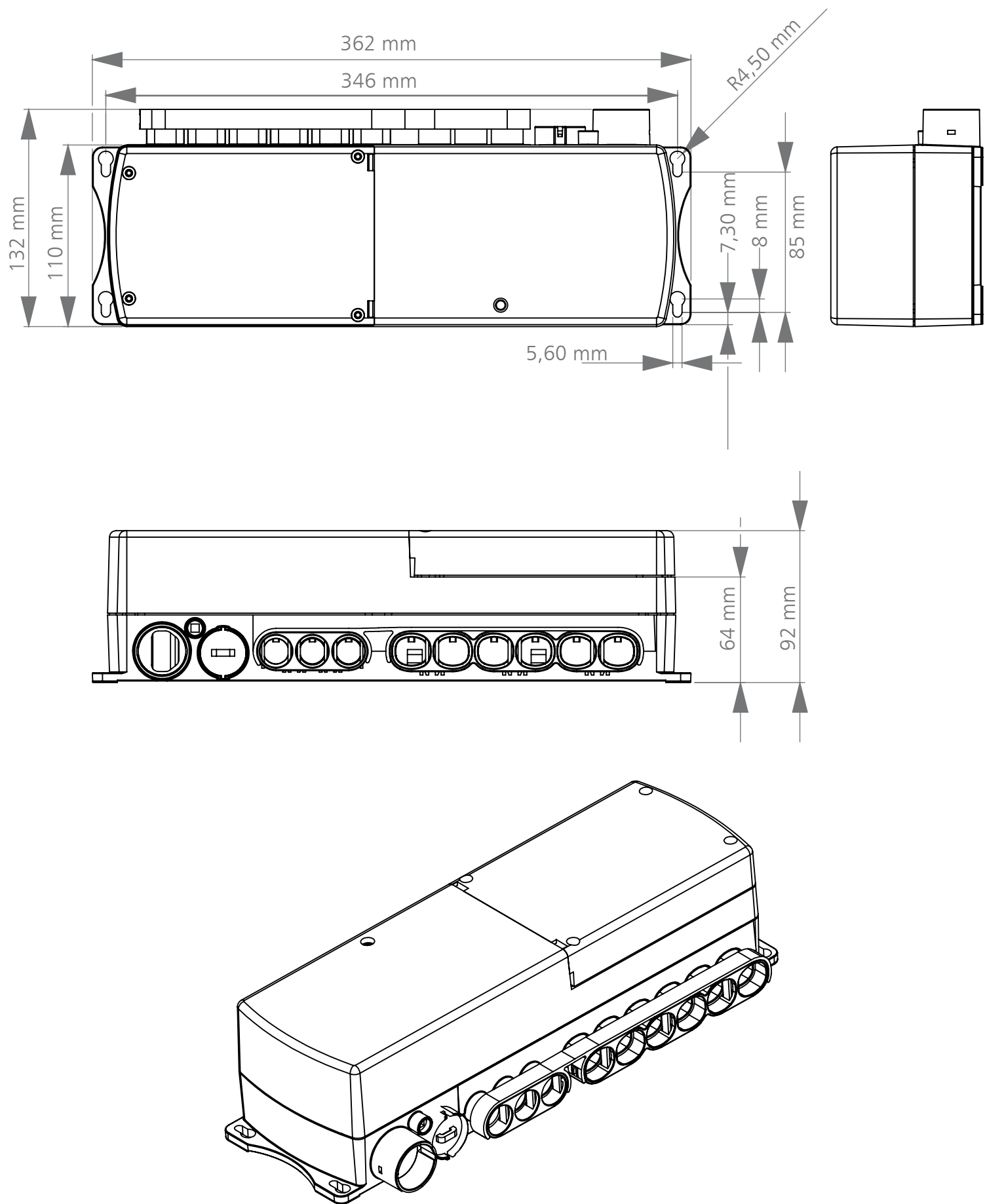
HEALTHCARE SERIES/CONTROL BOXES



## GENERAL FEATURES

Controls Capacity	3
Actuator Control Capacity	4
IP Code	IPX6
Housing colour	RAL7035
Operating Temperature	-10°C to +50°C
Storage Temperature	-10°C to +50°C
Software	MSBus
Function LED	Yes
Power Supply	120 / 230 VAC 50/60 Hz (internal transformer)
Safety system	Thermally protected. Short-circuit protected.
Protection class	Class 2, Class 1 is possible with AC cable
Internal Battery	Yes
Control Method	Relay

**DIMENSION DRAWING**



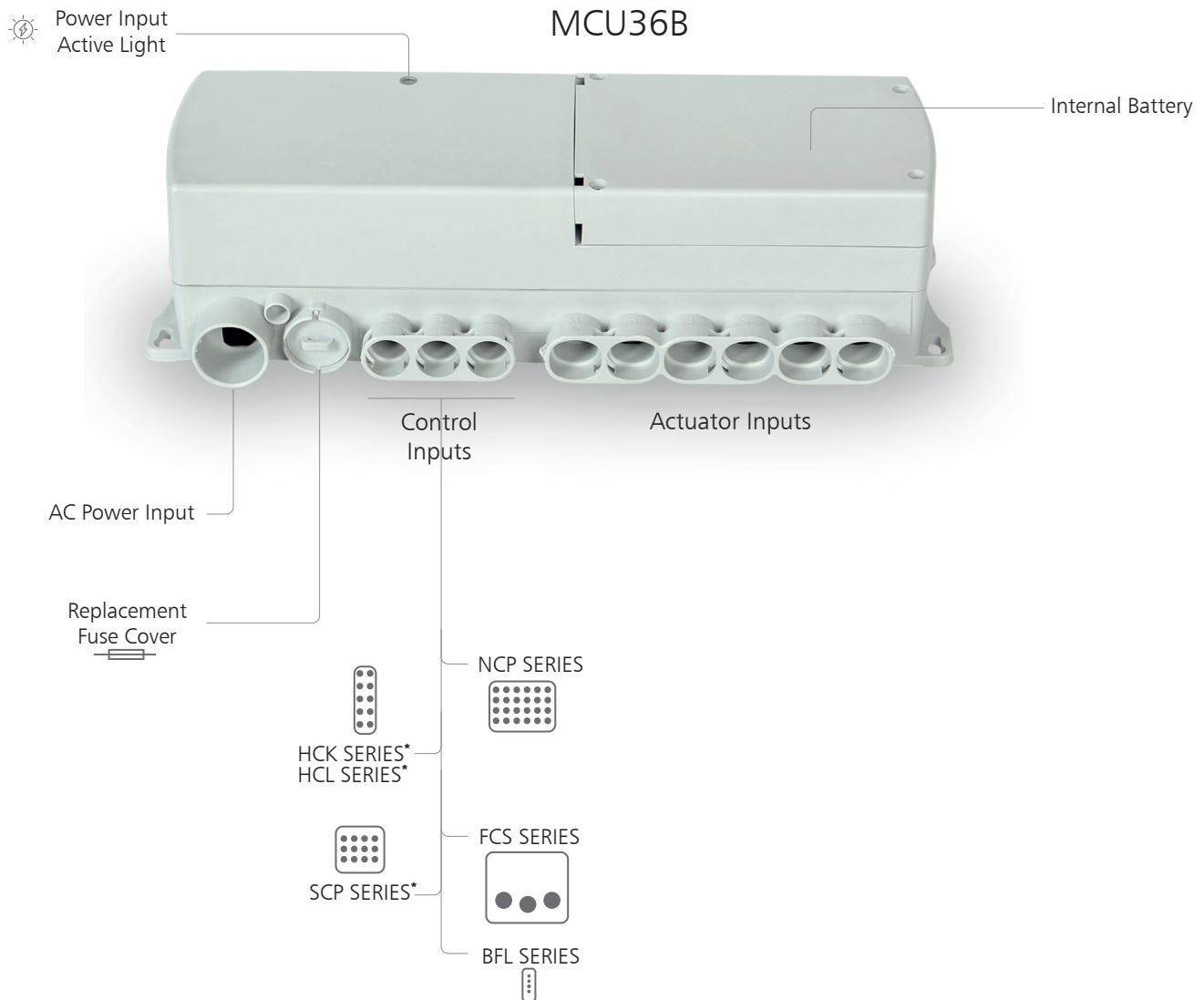
## ORDERING KEY

		<b>MC36</b>
System Architecture	<b>M:</b> MsBus	<b>M</b>
Software Code	<b>01:</b> Standard Software Code <b>XX:</b> Special Software Code <small>The code documentation will be shared with our customers.</small>	<b>01</b>
IP Degree	<b>6:</b> IPX6	<b>6</b>
Number of Controls	<b>3:</b> 3 Controls	<b>3</b>
Number of Actuators	<b>4:</b> 4 Actuators	<b>4</b>
Power	<b>28:</b> 280W	<b>28</b>
Housing Colour	<b>1:</b> RAL7035	<b>1</b>
Battery	<b>B:</b> Internal Battery	<b>B</b>
Control Method	<b>R:</b> Relay	<b>R</b>
H-Bridge	<b>1:</b> Full Bridge	<b>1</b>
Power Supply	<b>1:</b> Transformer	<b>1</b>
Electrical Class	<b>2:</b> Class 2	<b>2</b>
Grounding	<b>2:</b> On AC Cable	<b>2</b>
Reserved for Future Use	<b>00:</b> None	<b>00</b>

Ordering example: **MC36M01634281BR112200**

## SYSTEM COMPATIBILITY

Ordering Key:MC36M01634281BR112200



HCK SERIES\*, HCL SERIES\* and SCP SERIES\* are only usable with 180 degree cable. Please review the HCK, HCL and SCP datasheet for detailed information.

### Terms of Use

The user is responsible for determining the suitability of MUKATECH products for a specific application. MUKATECH products are subject to change without prior notice.

### Document Revision Information

MUKATECH 20230920 DT.REV03

