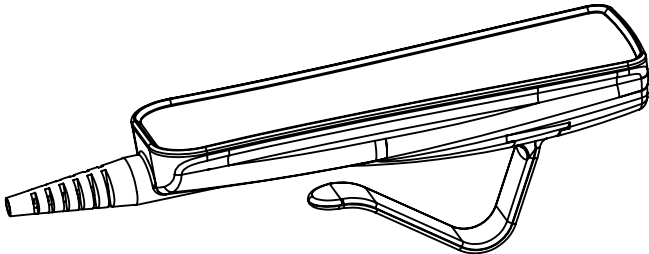
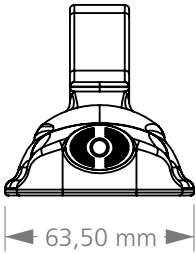
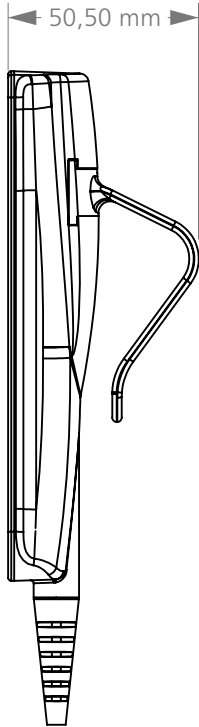
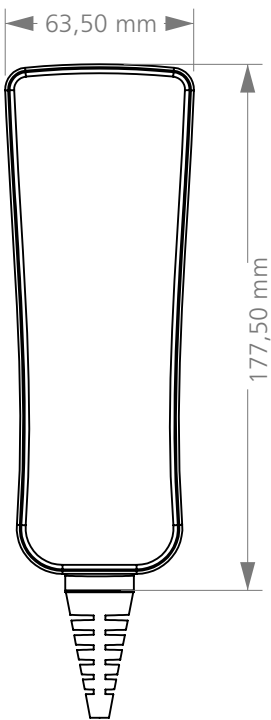




GENERAL FEATURES

Number of Keys	up to 11 buttons
Actuator Control Capacity	max. 4
IP Code	IPX6
Housing colour	RAL7035
Operating Temperature	+5°C to +40°C
Storage Temperature	-10°C to +50°C
Software	No
Function LED	No
Power Supply	With cable in Control Boxes

DIMENSION DRAWING



ORDERING KEY

		HCA
System Architecture	A: Analogue	A
Software Code	00: None	00
IP Degree	6: IPX6	6
Button Number	11: 11 Buttons XX: Up to 12 buttons could be selected.	11
Membrane Item Number	XX: Last 2 digits of frontcover item number The membrane documentation will be shared with our customers.	01
Mounting	3: Hook Handset	3
Housing Colour	1: RAL7035	1
Cable	+ : Internal Cable	+
Cable Type	1: Spiral Cable	1
Connector	6: Modular Jack 10P8C 90° plug Only for analog system option	6
Cable Length	8: 3600mm 9: 5000mm	8

Ordering example: HCAA006110131+168

SYSTEM COMPATIBILITY

HCAA006110131+168



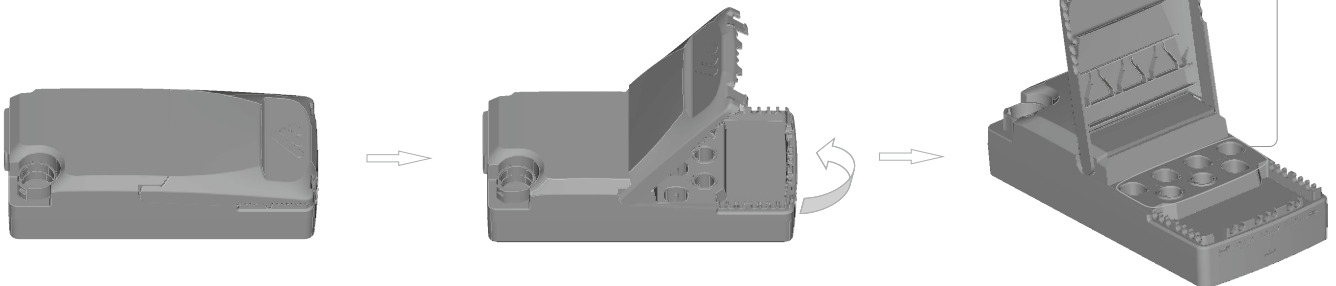
Compatible control
box models
-MCA71
-MCA81

Actuator Inputs



Battery
Input

Other compatible
all Controls



Terms of Use

The user is responsible for determining the suitability of MUKATECH products for a specific application. MUKATECH products are subject to change without prior notice.

Document Revision Information

MUKATECH 20241104 DT.REV02