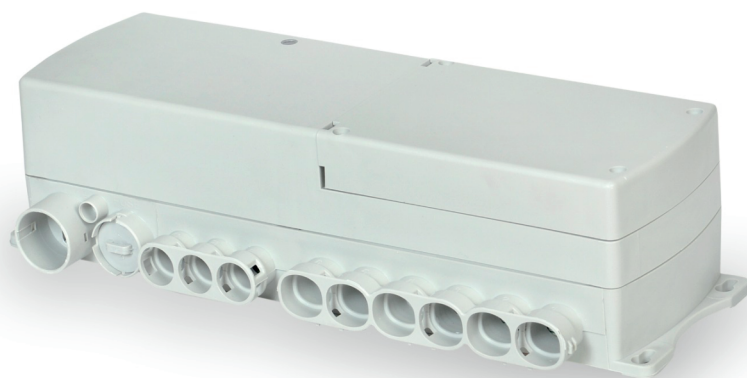


# MCU36B

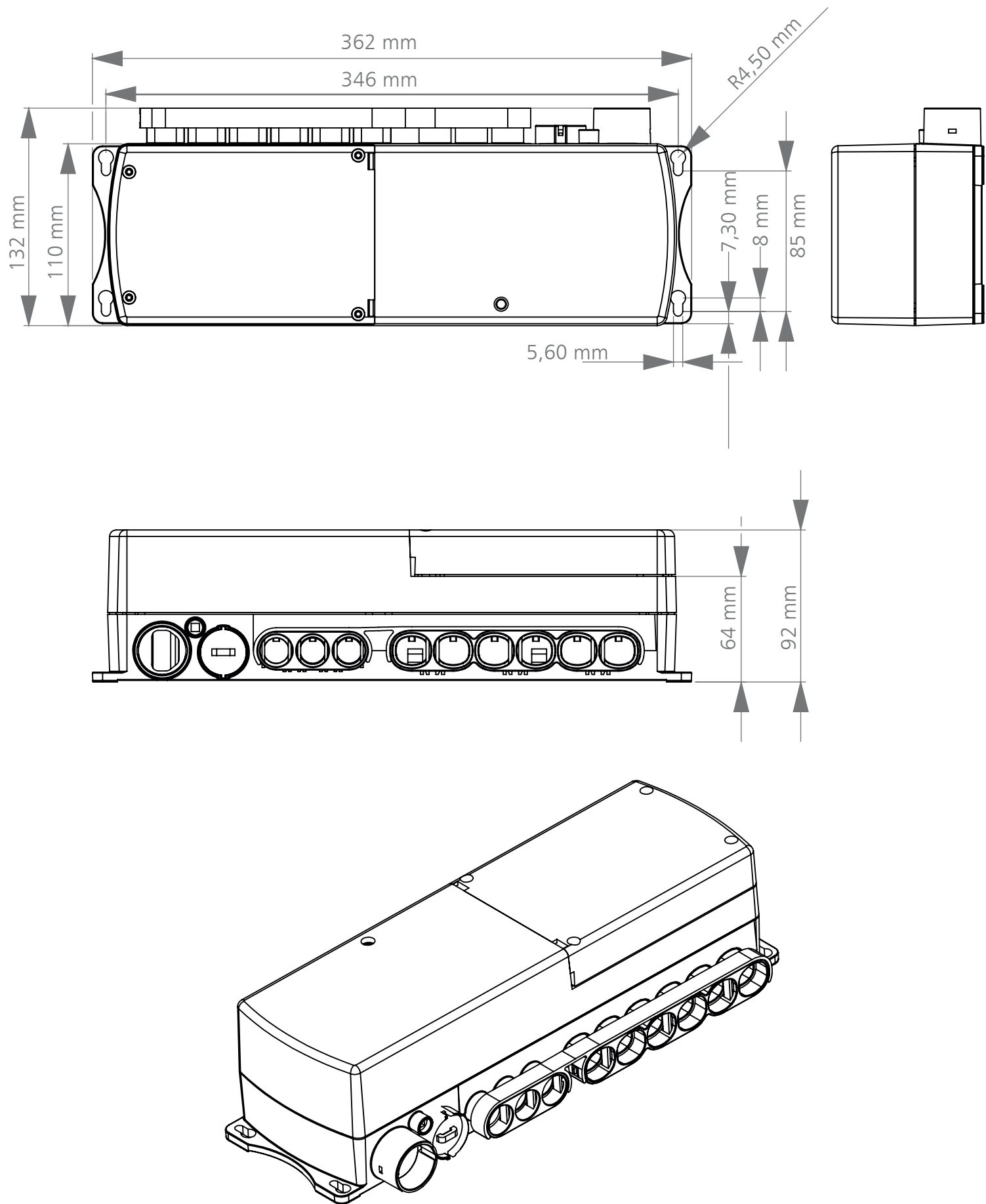
HEALTCARE SERIES/CONTROL BOXES



## GENERAL FEATURES

Controls Capacity	3
Actuator Control Capacity	4
IP Code	IPX6
Housing colour	RAL7035
Operating Temperature	+5°C to +40°C
Storage Temperature	-10°C to +50°C
Software	MSBus
Function LED	Yes
Power Supply	120 / 230 VAC 50/60 Hz (internal transformer)
Safety system	Thermally protected. Short-circuit protected.
Protection class	Class 2, Class 1 is possible with AC cable
Internal Battery	Yes
Control Method	Relay

DIMENSION DRAWING



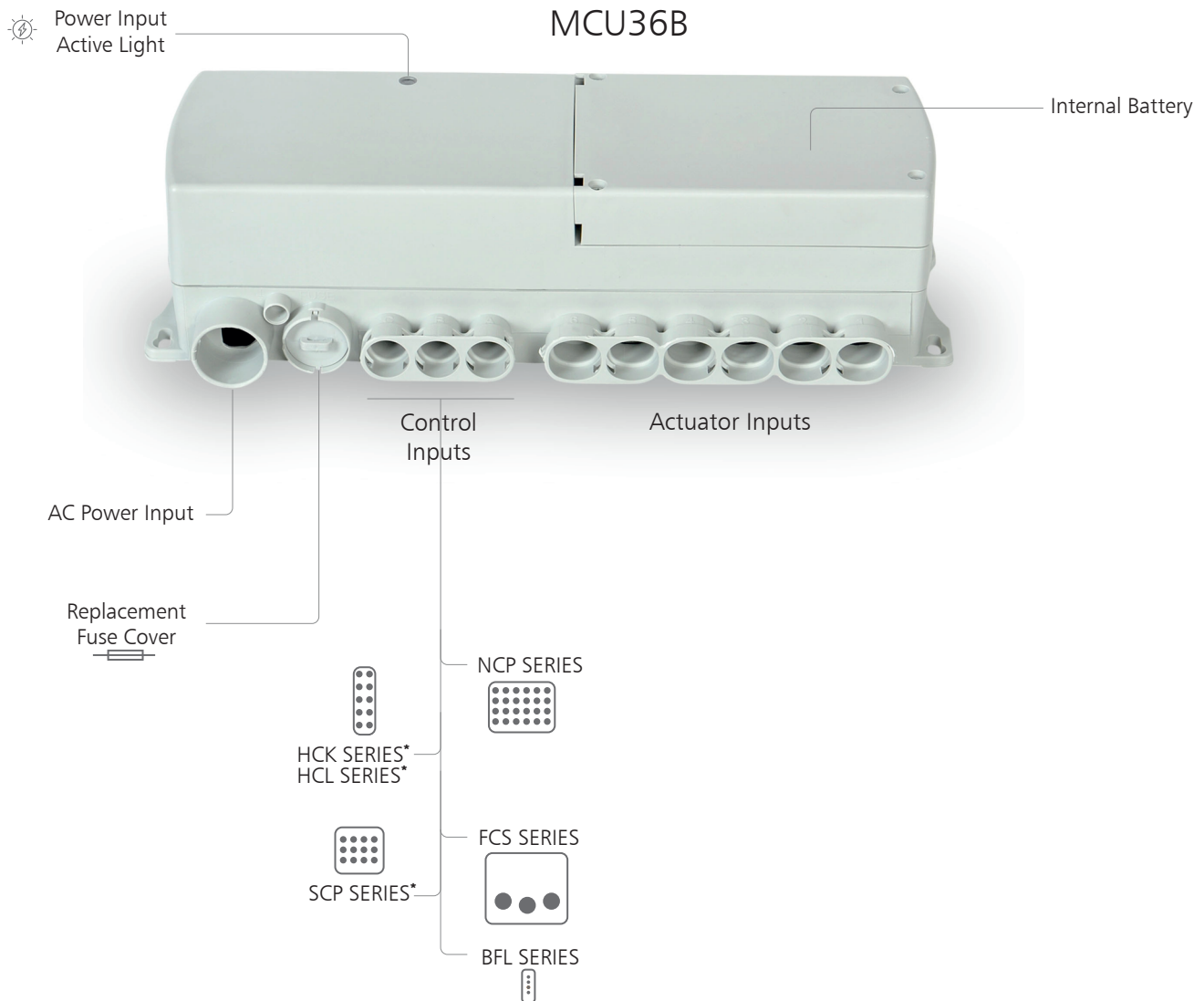
## ORDERING KEY

		MC36
System Architecture	M: MsBus	M
Software Code	01: Standard Software Code XX: Special Software Code <small>The code documentation will be shared with our customers.</small>	01
IP Degree	6: IPX6	6
Number of Controls	3: 3 Controls	3
Number of Actuators	4: 4 Actuators	4
Power	28: 280W	28
Housing Colour	1: RAL7035	1
Battery	B: Internal Battery	B
Control Method	R: Relay	R
H-Bridge	1: Full Bridge	1
Power Supply	1: Transformer	1
Electrical Class	2: Class 2	2
Grounding	2: On AC Cable	2
Reserved for Future Use	00: None	00

Ordering example: MC36M01634281BR112200

## SYSTEM COMPATIBILITY

Ordering Key:MC36M01634281BR112200



HCK SERIES\*, HCL SERIES\* and SCP SERIES\* are only usable with 180 degree cable. Please review the HCK, HCL and SCP datasheet for detailed information.

### Terms of Use

The user is responsible for determining the suitability of MUKATECH products for a specific application. MUKATECH products are subject to change without prior notice.

### Document Revision Information

MUKATECH 20230920 DT.REV03

